

40<sup>yrs</sup>  
excellence in manufacturing

## EARTHING AND LIGHTNING PROTECTION

Unitech<sup>®</sup>





Unitech® lightning and earthing protection systems was founded by Singaporean pioneer Steve Yeo utilizing technology available in 1978. In its past 37 plus years, Unitech® has continued to strive for perfection through its research & development based on leading national standards.

With a global distribution network across 5 continents and over 40 countries, Unitech has become one of the leading renowned brands in the lightning & earthing protection industry.

With a complete product range consisting of: Air termination, round & flat conductors, earth rods, exothermic welding & earthing accessories, we have put together one of the most extensive product ranges in our industry complying to standards such as UL & British Standards.

Unitech's lightning and earthing solutions are widely used in construction, telecommunications, railways, power distribution networks, oil & mining industries. Our team of experienced professionals can offer solutions in the most difficult situations.

Our continual success for over 37 years has been based on by our uncompromising quality, service, technical support and reputation.

Our sole mission is to carry this tradition for years to come.



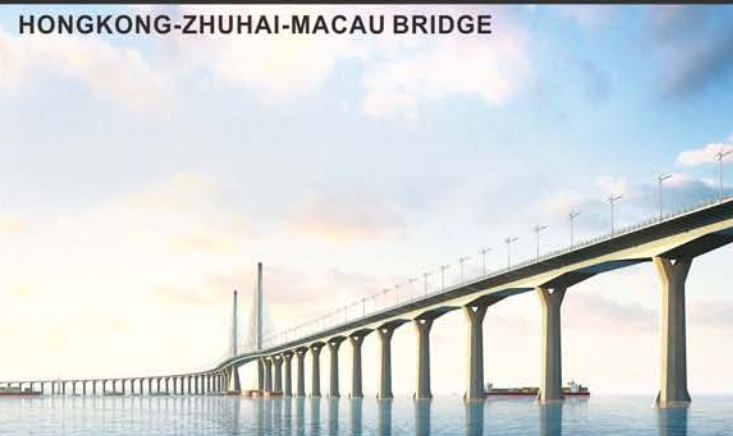
IFC - SHANGHAI



CHINA WORLD TOWER - BEIJING



ICC - HONG KONG



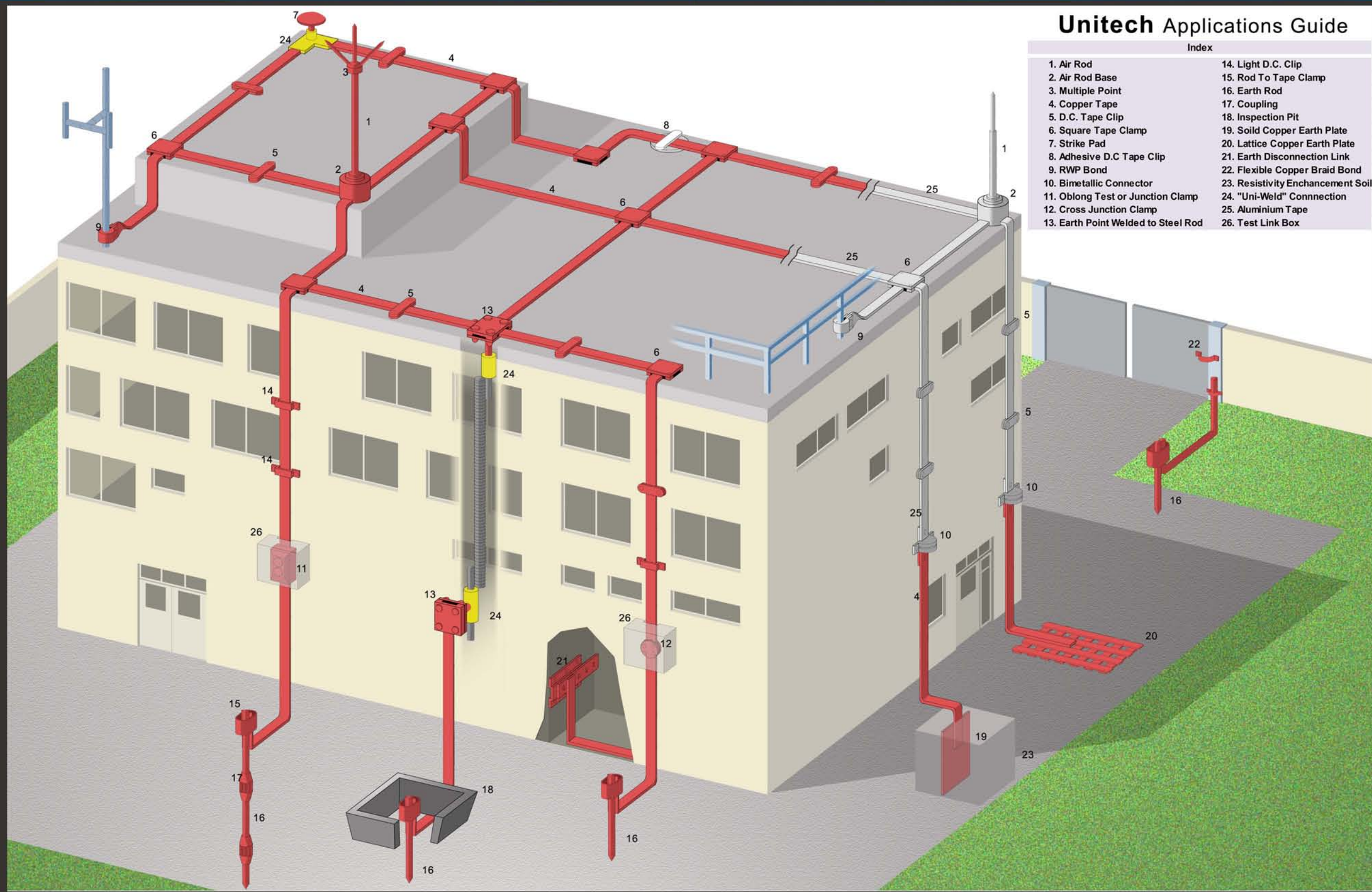
HONGKONG-ZHUHAI-MACAU BRIDGE



STONECUTTERS BRIDGE - HONG KONG

GLOBAL DISTRIBUTION NETWORK





**Unitech Applications Guide**

Index	
1. Air Rod	14. Light D.C. Clip
2. Air Rod Base	15. Rod To Tape Clamp
3. Multiple Point	16. Earth Rod
4. Copper Tape	17. Coupling
5. D.C. Tape Clip	18. Inspection Pit
6. Square Tape Clamp	19. Solid Copper Earth Plate
7. Strike Pad	20. Lattice Copper Earth Plate
8. Adhesive D.C. Tape Clip	21. Earth Disconnection Link
9. RWP Bond	22. Flexible Copper Braid Bond
10. Bimetallic Connector	23. Resistivity Enhancement Soil
11. Oblong Test or Junction Clamp	24. "Uni-Weld" Connection
12. Cross Junction Clamp	25. Aluminium Tape
13. Earth Point Welded to Steel Rod	26. Test Link Box

## Multiple Point

Rod Dia	Thread Dia	Material	Part No
14/15mm	5/8"	Copper	MP14
14/15mm	5/8"	Aluminium	MP14A
14/15mm	5/8"	Tinned Copper	MP14T
16mm	5/8"	Copper	MP16
16mm	5/8"	Aluminium	MP16A
16mm	5/8"	Tinned Copper	MP16T
17.2mm	3/4"	Copper	MP17
17.2mm	3/4"	Aluminium	MP17A
17.2mm	3/4"	Tinned Copper	MP17T
25mm	1"	Copper	MP25
25mm	1"	Aluminium	MP25A
25mm	1"	Tinned Copper	MP25T



## Air Rod- To IEC 62561-2

Rod Length	Rod Dia	Thread Dia	Part No	Part No	Part No
			Copper	Tinned Copper	Aluminium
500mm	14mm	5/8"	AR0514	AR0514T	AR0514A
1000mm	14mm	5/8"	AR1014	AR1014T	AR1014A
1500mm	14mm	5/8"	AR1514	AR1514T	AR1514A
2000mm	14mm	5/8"	AR2014	AR2014T	AR2014A
500mm	15mm	5/8"	AR0515	AR0515T	AR0515A
1000mm	15mm	5/8"	AR1015	AR1015T	AR1015A
1500mm	15mm	5/8"	AR1515	AR1515T	AR1515A
2000mm	15mm	5/8"	AR2015	AR2015T	AR2015A
300mm	16mm	5/8"	AR0316	AR0316T	AR0316A
500mm	16mm	5/8"	AR0516	AR0516T	AR0516A
1000mm	16mm	5/8"	AR1016	AR1016T	AR1016A
2000mm	16mm	5/8"	AR2016	AR2016T	AR2016A
500mm	17.2mm	3/4"	AR0517	AR0517T	AR0517A
1000mm	17.2mm	3/4"	AR1017	AR1017T	AR1017A
1500mm	17.2mm	3/4"	AR1517	AR1517T	AR1517A
2000mm	17.2mm	3/4"	AR2017	AR2017T	AR2017A
500mm	20mm	3/4"	AR0520	AR0520T	AR0520A
1000mm	20mm	3/4"	AR1020	AR1020T	AR1020A
1500mm	20mm	3/4"	AR1520	AR1520T	AR1520A
2000mm	20mm	3/4"	AR2020	AR2020T	AR2020A
500mm	25mm	1"	AR0525	AR0525T	AR0525A
1000mm	25mm	1"	AR1025	AR1025T	AR1025A
1500mm	25mm	1"	AR1525	AR1525T	AR1525A
2000mm	25mm	1"	AR2025	AR2025T	AR2025A



## Air Rod Base - For Copper Tape Use To IEC 62561-1

Thread Dia	Part No (Copper)	Part No (Tinned Copper)	Part No (Aluminium)
5/8"	ARB14	ARB14T	ARB14A
5/8"	ARB15	ARB15T	ARB15A
5/8"	ARB16	ARB16T	ARB16A
3/4"	ARB17	ARB17T	ARB17A
1"	ARB25	ARB25T	ARB25A



## Air Rod Base - For Cable Use

Rod Dia	Conductor Size	Material	Part No
5/8"	95mm <sup>2</sup>	Copper	ARC14
5/8"	95mm <sup>2</sup>	Aluminium	ARC14A



## Air Rod Base - Vertically Mounted (For 8mm Dia Conductor Use)

Rod Dia	Thread Dia	Material	Part No
8mm	10mm	Copper	ARBV8
8mm	10mm	Aluminium	ARBV8A
8mm	10mm	Tinned Copper	ARBV8T



## Air Rod Base - Horizontally Mounted (For 8mm Dia Conductor Use)

Rod Dia	Thread Dia	Material	Part No
8mm	10mm	Copper	ARBH8
8mm	10mm	Aluminium	ARBH8A
8mm	10mm	Tinned Copper	ARBH8T



## Ridge Air Rod Base

Rod Dia	Thread Dia	Material	Part No
14mm	5/8"	Copper	ARS14
14mm	5/8"	Aluminium	ARS14A
14mm	5/8"	Tinned Copper	ARS14T
16mm	5/8"	Copper	ARS16
16mm	5/8"	Aluminium	ARS16A
16mm	5/8"	Tinned Copper	ARS16T



## Air Rod Bracket

Rod Dia	Thread Dia	Material	Part No
14mm	5/8"	Copper	ARK14
14mm	5/8"	Aluminium	ARK14A
14mm	5/8"	Tinned Copper	ARK14T

## Rod to Tape / Cable Coupling

Rod Dia	Thread Dia	Conductor Size	Material	Part No
14mm	5/8"	25 x 3mm	Copper	RTCC14
14mm	5/8"	25 x 3mm	Aluminium	RTCC14A
14mm	5/8"	25 x 3mm	Tinned Copper	RTCC14T
14mm	5/8"	50mm <sup>2</sup>	Copper	RTCC50
14mm	5/8"	70mm <sup>2</sup>	Copper	RTCC70
14mm	5/8"	95mm <sup>2</sup>	Copper	RTCC95



## Strike Pad with Copper Stem

Rod Dia	Length	Material	Part No
10mm	60mm	Copper	SPWS10
10mm	60mm	Aluminium	SPWS10A
10mm	60mm	Tinned Copper	SPWS10T



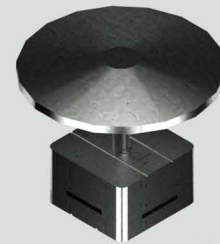
## Strike Pad Welded to Bar / Tape

Material	Part No
Copper	SP10W
Aluminium	SP10WA
Tinned Copper	SP10WT



## Special Square Clamp for Strike Pad

Tape Size	Material	Part No
25x3mm	Tinned Copper	SPSC10T-253
25x6mm	Tinned Copper	SPSC10T-256
50x6mm	Tinned Copper	SPSC10T-506



## Puddle Flange

Plate Size	Material	Part No
150 x 150 x 3mm <sup>3</sup>	Copper	PF10
150 x 150 x 3mm <sup>3</sup>	Aluminium	PF10A
150 x 150 x 3mm <sup>3</sup>	Tinned Copper	PF10T



## Free Standing / Wall Mount Mast for Air Terminal

Length	Section	Free Standing Type		Wall Mount Type	
		Part No (S.S316)	Part No (Galv.Steel)	Part No (S.S316)	Part No (Galv.Steel)
	1	FSMS10	FSMG10	WMS10	WMG10
1.5m	1	FSMS15	FSMG15	WMS15	WMG15
2m	1	FSMS20	FSMG20	WMS20	WMG20
2.5m	1	FSMS25	FSMG25	WMS25	WMG25
3m	1	FSMS30	FSMG30	WMS30	WMG30
3.5m	2	FSMS35	FSMG35	WMS35	WMG35
4m	2	FSMS40	FSMG40	WMS40	WMG40
4.5m	2	FSMS45	FSMG45	WMS45	WMG45
5m	2	FSMS50	FSMG50	WMS50	WMG50
5.5m	2	FSMS55	FSMG55		
6m	2	FSMS60	FSMG60		
7.5m	2 / 3	FSMS75	FSMG75		
8m	2 / 3	FSMS80	FSMG80		
8.5m	2 / 3	FSMS85	FSMG85		
9m	2 / 3	FSMS90	FSMG90		
		FSMS95	FSMG95		
		FSMS100	FSMG100		

Suitable for Air Rod / Strike Pad / ESE Terminal with adapter

Other size available on request . FSMSxx / WMGxx (e.g : S.S.316 , 3.9m =FSMS39)

Detail size / dimensions are subject to approved drawing or on requested.



## Air Terminal Adapter

Thread Dia	Adapting Type	Material	Conductor Size		Part No
			Tape (mm)	Cable (mm <sup>2</sup> )	
5/8"	Air Rod	Copper	20x3 - 31x6	50 - 70	MA16
5/8"	Air Rod	Stainless Steel 316	20x3 - 31x6	50 - 70	MA16SS
5/8"	Air Rod	Aluminium	20x3 - 31x6	50 - 70	MA16A
M20	ESE Terminal	Copper	20x3 - 31x6	50 - 70	MA20
M20	ESE Terminal	Stainless Steel 316	20x3 - 31x6	50 - 70	MA20SS



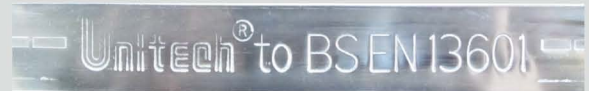
## Bare And Tinned Copper Tape

Copper Tape to BS EN 13601 / IEC 62561-2

Conductor Size	Part No (Bare)	Part No (Tinned)
20 x 3mm	CT203	CT203T
25 x 2mm	CT252	CT252T
25 x 3mm	CT253	CT253T
25 x 4mm	CT254	CT254T
25 x 6mm	CT256	CT256T
31 x 3mm	CT313	CT313T
31 x 3.25mm	CT313.25	CT313.25T
38 x 3mm	CT383	CT383T
38 x 5mm	CT385	CT385T
38 x 6mm	CT386	CT386T
40 x 4mm	CT404	CT404T
40 x 6mm	CT406	CT406T
50 x 3mm	CT503	CT503T
50 x 4mm	CT504	CT504T
50 x 6mm	CT506	CT506T



Bare



Tinned

## Bare And Tinned Copper Tape (Embossed "CLP" Logo)

Copper Tape to BS EN 13601 / IEC 62561-2

Conductor Size	Part No (Bare)	Part No (Tinned)
25 x 3mm	CT253-CLP	CT253T-CLP
50 x 6mm	CT506-CLP	CT506T-CLP

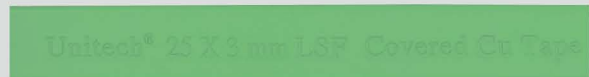
## LSF And PVC Covered Copper Tape

PVC Colours to BS 5252 & Copper Tape to BS EN 13601 / IEC 62561-2

Conductor Size	Colour Range	Part No (LSF)	Part No (PVC)
25 X 3mm	Green	CT253LS-GN	CT253P-GN
25 X 3mm	Grey	CT253LS-GR	CT253P-GR
25 X 3mm	White	CT253LS-WE	CT253P-WE
25 X 3mm	Brown	CT253LS-BW	CT253P-BW
25 X 6mm	Green	CT256LS-GN	CT256P-GN
25 X 6mm	Grey	CT256LS-GR	CT256P-GR
25 X 6mm	White	CT256LS-WE	CT256P-WE
25 X 6mm	Brown	CT256LS-BW	CT256P-BW
38 X 6mm	Green	CT386LS-GN	CT386P-GN
38 X 6mm	Grey	CT386LS-GR	CT386P-GR
38 X 6mm	White	CT386LS-WE	CT386P-WE
38 X 6mm	Brown	CT386LS-BW	CT386P-BW
50 X 6mm	Green	CT506LS-GN	CT506P-GN
50 X 6mm	Grey	CT506LS-GR	CT506P-GR
50 X 6mm	White	CT506LS-WE	CT506P-WE
50 X 6mm	Brown	CT506LS-BW	CT506P-BW



CT253P-GN



CT253LS-GN

\* PVC colours to BS 5252 All colours available on request

## Flame Retardant Covered Bare/Tinned Copper Tape

Tape to IEC 62561-2 & Flame Retardant to UL94 : V0

Conductor Size	Colour Range	Part No (BARE)	Part No (TINNED)
25 X 3mm	Green	CT253FR-GN	CT253TFR-GN
25 X 3mm	Grey	CT253FR-GR	CT253TFR-GR
25 X 3mm	White	CT253FR-WE	CT253TFR-WE
25 X 3mm	Brown	CT253FR-BW	CT253TFR-BW
25 X 6mm	Green	CT256FR-GN	CT256TFR-GN
25 X 6mm	Grey	CT256FR-GR	CT256TFR-GR
25 X 6mm	White	CT256FR-WE	CT256TFR-WE
25 X 6mm	Brown	CT256FR-BW	CT256TFR-BW
38 X 6mm	Green	CT386FR-GN	CT386TFR-GN
38 X 6mm	Grey	CT386FR-GR	CT386TFR-GR
38 X 6mm	White	CT386FR-WE	CT386TFR-WE
38 X 6mm	Brown	CT386FR-BW	CT386TFR-BW
50 X 6mm	Green	CT506FR-GN	CT506TFR-GN
50 X 6mm	Grey	CT506FR-GR	CT506TFR-GR
50 X 6mm	White	CT506FR-WE	CT506TFR-WE
50 X 6mm	Brown	CT506FR-BW	CT506TFR-BW

Unitech® 25 X 3 mm FR Covered Cu Tape

CT253FR-GN

## LSF And PVC Covered Tinned Copper Tape

PVC Colours to BS 5252 & Copper Tape to BS EN 13601 / IEC 62561-2

Conductor Size	Colour Range	Part No (LSF)	Part No (PVC)
25 X 3mm	Green	CT253TLS-GN	CT253TP-GN
25 X 3mm	Grey	CT253TLS-GR	CT253TP-GR
25 X 3mm	White	CT253TLS-WE	CT253TP-WE
25 X 3mm	Brown	CT253TLS-BW	CT253TP-BW
25 X 6mm	Green	CT256TLS-GN	CT256TP-GN
25 X 6mm	Grey	CT256TLS-GR	CT256TP-GR
25 X 6mm	White	CT256TLS-WE	CT256TP-WE
25 X 6mm	Brown	CT256TLS-BW	CT256TP-BW
38 X 6mm	Green	CT386TLS-GN	CT386TP-GN
38 X 6mm	Grey	CT386TLS-GR	CT386TP-GR
38 X 6mm	White	CT386TLS-WE	CT386TP-WE
38 X 6mm	Brown	CT386TLS-BW	CT386TP-BW
50 X 6mm	Green	CT506TLS-GN	CT506TP-GN
50 X 6mm	Grey	CT506TLS-GR	CT506TP-GR
50 X 6mm	White	CT506TLS-WE	CT506TP-WE
50 X 6mm	Brown	CT506TLS-BW	CT506TP-BW

Unitech® 25 X 3 mm PVC Covered Cu Tape

CT253TP-GN

Unitech® 25 X 3 mm LSF Covered Cu Tape

CT253TLS-GN

\* PVC colours to BS 5252 All colours available on request

## Stainless Steel Tape - Grade 316

Stainless Steel Tape to BS EN 50164-2

Conductor Size	Part No
25x3mm	SST253
25x6mm	SST256
28x3mm	SST283



## Bare and Tinned Hard Drawn Copper Bar

Copper Bar to BS EN 13601

Conductor Size	Part No (Bare)	Part No (Tinned)
25x3mm	CT253H	CT253HT
25x6mm	CT256H	CT256HT
38x6mm	CT386H	CT386HT
50x6mm	CT506H	CT506HT
50x10mm	CT5010H	CT5010HT
75x6mm	CT756H	CT756HT
100x6mm	CT1006H	CT1006HT



## Bare and Tinned Flexible Copper Braid

Nominal Size	Part No (Bare)	Part No (Tinned)
12x1mm	FCB121	FCB121T
15x1.5mm	FCB151	FCB151T
19x2.5mm	FCB192	FCB192T
25x3.5mm	FCB253	FCB253T
32x6mm	FCB326	FCB326T



## Bare And PVC/LSF Covered Aluminium Tape

Aluminium Tape to BS2898-1350 / IEC 62561-2

Conductor Size	Part No
25x3mm	CT253A
25x6mm	CT256A

Conductor Size	Color	Part No (PVC)	Part No (LSF)
25x3mm	Green	CT253AP-GN	CT253ALS-GN
25x3mm	Grey	CT253AP-GR	CT253ALS-GR

\*PVC Colours to BS 5252 are available on request.



CT253A



CT253AP-GN

## Bare and PVC Covered Solid Circular Conductor

Diameter	Cross-sectional Area	Conductor Material	Part No (Solid)	Part No (PVC)
8mm	50mm <sup>2</sup>	Copper	CC8	CC8P



## Bare Stranded Copper Conductor

Soft Drawn Stranded Copper Conductor to EN 60228 & BS 6360

Conductor Size	# Strands / Size	Part No
6mm <sup>2</sup>	7 / 1.04	SCC06
16mm <sup>2</sup>	7 / 1.70	SCC16
25mm <sup>2</sup>	7 / 2.14	SCC25
35mm <sup>2</sup>	7 / 2.52	SCC35
50mm <sup>2</sup>	19 / 1.78	SCC50
70mm <sup>2</sup>	19 / 2.14	SCC70
95mm <sup>2</sup>	19 / 2.52	SCC95
100mm <sup>2</sup>	24 / 2.35	SCC100
120mm <sup>2</sup>	37 / 2.03	SCC120
150mm <sup>2</sup>	37 / 2.25	SCC150
185mm <sup>2</sup>	37 / 2.52	SCC185
240mm <sup>2</sup>	61 / 2.25	SCC240
300mm <sup>2</sup>	61 / 2.52	SCC300



## PVC Covered Stranded Copper Conductor

PVC Colour to BS 6746C

Conductor Size	# Strands / Size	Part No
6mm <sup>2</sup>	7 / 1.04	SCC06P
16mm <sup>2</sup>	7 / 1.70	SCC16P
25mm <sup>2</sup>	7 / 2.14	SCC25P
35mm <sup>2</sup>	7 / 2.52	SCC35P
50mm <sup>2</sup>	19 / 1.78	SCC50P
70mm <sup>2</sup>	19 / 2.14	SCC70P
95mm <sup>2</sup>	19 / 2.52	SCC95P
120mm <sup>2</sup>	37 / 2.03	SCC120P
150mm <sup>2</sup>	37 / 2.25	SCC150P
185mm <sup>2</sup>	37 / 2.52	SCC185P
240mm <sup>2</sup>	61 / 2.25	SCC240P
300mm <sup>2</sup>	61 / 2.52	SCC300P



## Galvanized Steel Tape

Conductor Size	Part No
20x3mm	GST203
25x3mm	GST253
25x4mm	GST254
25x6mm	GST256
31x3mm	GST313
31x6mm	GST316
38x3mm	GST383
38x5mm	GST385
38x6mm	GST386
40x4mm	GST404
40x6mm	GST406
50x3mm	GST503
50x4mm	GST504
50x6mm	GST506



## Copper Covered Steel Core

Cross-sectional Area	# Strands / Size	Part No
6mm <sup>2</sup>	7 / 1.04	SCSC06
16mm <sup>2</sup>	7 / 1.70	SCSC16
25mm <sup>2</sup>	7 / 2.14	SCSC25
35mm <sup>2</sup>	7 / 2.52	SCSC35
50mm <sup>2</sup>	19 / 1.78	SCSC50
70mm <sup>2</sup>	19 / 2.14	SCSC70
95mm <sup>2</sup>	19 / 2.52	SCSC95
120mm <sup>2</sup>	37 / 2.03	SCSC120
150mm <sup>2</sup>	37 / 2.25	SCSC150
185mm <sup>2</sup>	37 / 2.52	SCSC185
240mm <sup>2</sup>	61 / 2.25	SCSC240
300mm <sup>2</sup>	61 / 2.52	SCSC300



## Bare and Tinned DC Clip - To IEC 62561-4

(For Tinned or Bare Copper Tape)

Conductor Size	Part No (Bare)	Part No (Tinned)
12.5 x 1.5mm	DC121	DC121T
12.5 x 3mm	DC123	DC123T
20 x 1.5mm	DC201	DC201T
20 x 3mm	DC203	DC203T
25 x 1.5mm	DC251	DC251T
25 x 3mm	DC253	DC253T
25 x 4mm	DC254	DC254T
25 x 6mm	DC256	DC256T
31 x 3mm	DC313	DC313T
31 x 6mm	DC316	DC316T
38 x 3mm	DC383	DC383T
38 x 5mm	DC385	DC385T
38 x 6mm	DC386	DC386T
40 x 4mm	DC404	DC404T
40 x 6mm	DC406	DC406T
50 x 3mm	DC503	DC503T
50 x 4mm	DC504	DC504T
50 x 6mm	DC506	DC506T



## Bare and Tinned DC Clip - To IEC 62561-4

(For PVC Covered Copper Tape)

Conductor Size	Part No (Bare)	Part No (Tinned)
25 x 3mm	DC253P	DC253TP
25 x 6mm	DC256P	DC256TP
38 x 6mm	DC386P	DC386TP
50 x 6mm	DC506P	DC506TP



## Stainless Steel DC Clip - To BS EN 50164-1

(For Stainless Steel Tape)

Conductor Size	Part No
25 x 3mm	DC253SS
25 x 6mm	DC256SS
28 x 3mm	DC283SS



## Aluminium DC Clip - To IEC 62561-4

(For Aluminium Tape)

Conductor Size	Part No (Bare)	Part No (for PVC)
25 x 3mm	DC253A	DC253AP
25 x 6mm	DC256A	DC256AP



## Tape Clip

(For Copper, Tinned Copper and Aluminium Tape)

Conductor Size	Material	Part No (Tinned)
20x3mm	Copper	LDC203
20x3mm	Tinned Copper	LDC203T
20x3mm	Aluminium	LDC203A
25x3mm	Copper	LDC253
25x3mm	Tinned Copper	LDC253T
25x3mm	Aluminium	LDC253A
25x3mm (Top Only)	Copper	LDC253TOP
25x3mm (Top Only)	Aluminium	LDC253ATOP



## Non-metallic DC Clip

(For Bare Copper Tape)

Conductor Size	Colour	Part No
25x3mm	Green	DC203N-GN
25x3mm	White	DC203N-WE
25x3mm	Brown	DC253N-BW
25x3mm	Grey	DC253N-GR

\*Other PVC colours to BS5252 available on request.



## PVC and LSF Non-metallic DC Clip

(For PVC and LSF Covered Copper Tape)

Conductor Size	Colour	Part No (PVC)	Part No (LSF)
25x3mm	Green	DC253NP-GN	DC253LS-GN
25x3mm	Grey	DC253NP-GR	DC253LS-GR
25x3mm	White	DC253NP-WE	DC253LS-WE
25x3mm	Brown	DC253NP-BW	DC253LS-BW

## Non-Metallic DC Clip with Base Plate

(For Bare Copper Tape)

Conductor Size	Colour	Part No (PVC)	Part No (LSF)
25x3mm	Green	ADC253-GN	ADC253LS-GN
25x3mm	Grey	ADC253-GR	ADC253LS-GR
25x3mm	White	ADC253-WE	ADC253LS-WE
25x3mm	Brown	ADC253-BW	ADC253LS-BW

## Non-Metallic LSF DC Clip with Base Plate

(For PVC and LSF Covered Copper Tape)

Conductor Size	Colour	Part No (PVC)	Part No (LSF)
25x3mm	Green	ADCP253-GN	ADCP253LS-GN
25x3mm	Grey	ADCP253-GR	ADCP253LS-GR
25x3mm	White	ADCP253-WE	ADCP253LS-WE
25x3mm	Brown	ADCP253-BW	ADCP253LS-BW



## Bare and Tinned Square Clamp - To IEC 62561-1

(For Bare and Tinned Copper Tape)

Conductor Size	Part No (Bare)	Part No (Tinned)
25x3mm	SC253	SC253T
25x4mm	SC254	SC254T
25x6mm	SC256	SC256T
31x3mm	SC313	SC313T
31x6mm	SC316	SC316T
38x6mm	SC386	SC386T
50x6mm	SC506	SC506T



## Stainless Steel Square Clamp - To BS EN 50164-1

Conductor Size	Part No
25x3mm	SC253SS
25x6mm	SC256SS
28x3mm	SC283SS



## Aluminium Square Tape Clamp - To IEC 62561-1

Conductor Size	Part No
25x3mm	SC253A
25x6mm	SC256A



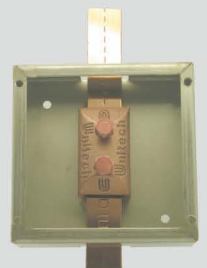
## Oblong Test or Junction Clamp - To IEC 62561-1

Conductor Size	Part No (Bare)	Part No (Tinned)
25x3mm	JC253	JC253T
25x6mm	JC256	JC256T
31x3mm	JC313	JC313T
38x6mm	JC386	JC386T
50x6mm	JC506	JC506T



## Junction Box For Oblong Test Clamp

25x6mm Max. Stainless Steel Junction Box	JB10SS
50x6mm Max. Hot Dip Galvanized Junction Box	JB883HG



## Cross Junction Clamp - To IEC 62561-1

Conductor Size	Material	Part No
25x3mm	Copper	CJC253
25x3mm	Aluminium	CJC253A



## Bimetallic Connector - To IEC 62561-1

Conductor Size	Part No
25x3mm Aluminium Tape to 25x3mm Copper Tape	BMC253



## Back Plate Holdfast Stem

Material	Part No
Copper	BPHS10
Aluminium	BPHS10A



## One Hole Cable Clip

Conductor Dia	Conductor Material	Part No
8mm	Copper	OHCC8
8mm	Tinned Copper	OHCC8T
8mm	Aluminium	OHCC8A
10mm	Copper	OHCC10
10mm	Tinned Copper	OHCC10T
10mm	Aluminium	OHCC10A



## Heavy Duty Cast Cable Saddle - To IEC 62561-1

Conductor Dia	Conductor Material	Part No
8mm	Copper	CCS8
8mm	Tinned Copper	CCS8T
8mm	Aluminium	CCS8A
10mm*	Copper	CCS10
10mm*	Tinned Copper	CCS10T
10mm*	Aluminium	CCS10A

\*PVC Covered 8mm conductor



## Glazing Bar Holdfast

Conductor Material	Max. Glazing Bar Width	Part No
Copper	12mm	BH12
Tinned Copper	12mm	BH12T
Aluminium	12mm	BH12A

\*To use with DC Clips



## Square Clamp

Conductor Dia	Material	Part No
8mm	Copper	CSC8
8mm	Tinned Copper	CSC8T
8mm	Aluminium	CSC8A



## Tee Clamp

Conductor Dia	Material	Part No
8mm	Copper	CTC8
8mm	Tinned Copper	CTC8T
8mm	Aluminium	CTC8A



## Jointing Clamp

Conductor Dia	Material	Part No
8mm	Copper	CJC8
8mm	Tinned Copper	CJC8T
8mm	Aluminium	CJC8A



## Test Clamp

Conductor Dia	Material	Part No
8mm	Copper	CTSC8
8mm	Tinned Copper	CTSC8T
8mm	Aluminium	CTSC8A



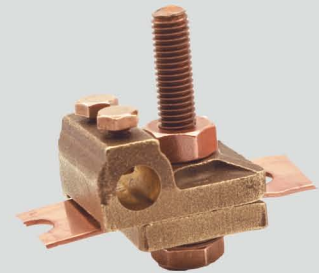
## Metalwork Bond

Conductor Dia	Material	Part No
8mm	Copper	CMB8
8mm	Tinned Copper	CMB8T
8mm	Aluminium	CMB8A



## Pipe Bond

Conductor Dia	Pipe Dia	Material	Part No
8mm	50-300mm	Copper	CPB8
8mm	50-300mm	Tinned Copper	CPB8T
8mm	50-300mm	Aluminium	CPB8A



## Re-Bar Clamp

Conductor Dia	Pipe Dia	Material	Part No
8mm	8-20mm	Copper	RBC820
8mm	8-20mm	Tinned Copper	RBC820T
8mm	20-40mm	Copper	RBC204
8mm	20-40mm	Tinned Copper	RBC204T



## Straight Conductor Socket

Conductor Dia	Palm Hole Dia	Material	Part No
8mm	12mm	Copper	SCS8
8mm	12mm	Tinned Copper	SCS8T
8mm	12mm	Aluminium	SCS8A



## Cable Test Junction Clamp

Conductor Size	Material	Part No
50mm <sup>2</sup>	Copper	CTJC50
70mm <sup>2</sup>	Copper	CTJC70
95mm <sup>2</sup>	Copper	CTJC95
50mm <sup>2</sup>	Tinned Copper	CTJC50T
70mm <sup>2</sup>	Tinned Copper	CTJC70T
95mm <sup>2</sup>	Tinned Copper	CTJC95T



## Square Cable Clamp

Conductor Size	Material	Part No
50mm <sup>2</sup>	Copper	SQC50
70mm <sup>2</sup>	Copper	SQC70
95mm <sup>2</sup>	Copper	SQC95
120mm <sup>2</sup>	Copper	SQC120
150mm <sup>2</sup>	Copper	SQC150
185mm <sup>2</sup>	Copper	SQC185
50mm <sup>2</sup>	Tinned Copper	SQC50T
70mm <sup>2</sup>	Tinned Copper	SQC70T
95mm <sup>2</sup>	Tinned Copper	SQC95T
120mm <sup>2</sup>	Tinned Copper	SQC120T
150mm <sup>2</sup>	Tinned Copper	SQC150T
185mm <sup>2</sup>	Tinned Copper	SQC185T



## Solid Copper Earth Rod

Rod Dia	Length	Part No
14mm	1200mm	SCE1412
14mm	1500mm	SCE1415
16mm	1200mm	SCE1612
16mm	1500mm	SCE1615
20mm	1200mm	SCE2012
20mm	1500mm	SCE2015
25mm	1200mm	SCE2512
25mm	1500mm	SCE2515

## Stainless Steel Rod

Rod Dia	Length	Part No
16mm	1200mm	SSE1612
16mm	1500mm	SSE1615
20mm	1200mm	SSE2012
20mm	1500mm	SSE2015

## Driving Stud

Rod Dia	Part No
14mm	DS014
16mm	DS016
20mm	DS020
25mm	DS025

## Coupling Dowel

Rod Dia	Part No
M10	CP010

## Spike

Rod Dia	Part No
14mm	DSK14
16mm	DSK16
20mm	DSK20
25mm	DSK25



Driving Stud



Solid Copper Earth Rod



Coupling Dowel



Solid Copper Earth Rod



Spike

## Unitech Copperbond Earth Rod - To IEC 62561-2

Steel Core: Low carbon high tensile steel, AISI-1018 (SAE-1018), UTS = 600N/mm<sup>2</sup>

Copper Jacket: 254 microns of 99.9% pure electrolytic

Rod Dia (Nominal)	Length	Rod Dia (Actual)	Part No (Threaded)	Part No (Non-Threaded)
(1/2")12.5mm	1200mm(4')	11mm	B001	NE001
(1/2")12.5mm	1500mm(5')	11mm	B002	NE002
(1/2")12.5mm	1800mm(6')	11mm	B003	NE003
(1/2")12.5mm	2400mm(8')	11mm	B004	NE004
(1/2")12.5mm	3000mm(10')	11mm	B005	NE005
(9/16")14mm	1200mm(4')	12.7mm	B101/127	NE101/127
(9/16")14mm	1500mm(5')	12.7mm	B102/127	NE102/127
(9/16")14mm	1800mm(6')	12.7mm	B103/127	NE103/127
(9/16")14mm	2400mm(8')	12.7mm	B104/127	NE104/127
(9/16")14mm	3000mm(10')	12.7mm	B105/127	NE105/127
(5/8")16mm	1200mm(4')	14.2mm	B201	NE201
(5/8")16mm	1500mm(5')	14.2mm	B202	NE202
(5/8")16mm	1800mm(6')	14.2mm	B203	NE203
(5/8")16mm	2400mm(8')	14.2mm	B204	NE204
(5/8")16mm	3000mm(10')	14.2mm	B205	NE205
(3/4")19mm	1200mm(4')	17.2mm	B301	NE301
(3/4")19mm	1500mm(5')	17.2mm	B302	NE302
(3/4")19mm	1800mm(6')	17.2mm	B303	NE303
(3/4")19mm	2400mm(8')	17.2mm	B304	NE304
(3/4")19mm	3000mm(10')	17.2mm	B305	NE305
(1")25mm	1200mm(4')	23.1mm	B401	NE401
(1")25mm	1500mm(5')	23.1mm	B402	NE402
(1")25mm	1800mm(6')	23.1mm	B403	NE403
(1")25mm	2400mm(8')	23.1mm	B404	NE404
(1")25mm	3000mm(10')	23.1mm	B405	NE405
M18	1500mm(5')	16mm	B1615	NE1615
M18	1800mm(6')	16mm	B1618	NE1618
M18	2400mm(8')	16mm	B1624	NE1624
M18	3000mm(10')	16mm	B1630	NE1630
M20	1500mm(5')	18mm	B1815	NE1815
M20	1800mm(6')	18mm	B1818	NE1818
M20	2400mm(8')	18mm	B1824	NE1824
M20	3000mm(10')	18mm	B1830	NE1830
M22	1500mm(5')	20mm	B2015	NE2015
M22	1800mm(6')	20mm	B2018	NE2018
M22	2400mm(8')	20mm	B2024	NE2024
M22	3000mm(10')	20mm	B2030	NE2030
M24	1500mm(5')	22mm	B2215	NE2215
M24	1800mm(6')	22mm	B2218	NE2218
M24	2400mm(8')	22mm	B2224	NE2224
M24	3000mm(10')	22mm	B2230	NE2230
M27	1500mm(5')	25mm	B2515	NE2515
M27	1800mm(6')	25mm	B2518	NE2518
M27	2400mm(8')	25mm	B2524	NE2524
M27	3000mm(10')	25mm	B2530	NE2530



\* Special sizes and copper thickness can be supplied on request.

**Stainless Steel Sheathed Earth Rod** GB/T 701-2008 ; Q235

Rod Dia	Length	Part No
10mm	3m/6m	OS12514
12mm	1800mm	OS12518
14mm	2400mm	OS12524
14mm	2400mm	OS12524

**Stainless Steel Coupling**

Thread Size	Length	Part No
12.5	60mm	CPSS500



OS Series

## Copper Coupling - To IEC 62561-1

Thread Size	Length	Part No
1/2"	60mm	CP500
9/16"	60mm	CP501
5/8"	70mm	CP502
3/4"	70mm	CP503
1"	70mm	CP504



## High Tensile Steel Driving Stud

For Earth Rod Size	Part No
1/2"	DS80
9/16"	DS81
5/8"	DS82
3/4"	DS83
1"	DS84



## Driving Spike

Rod Dia	Part No
9/16"	ES01
5/8"	ES02
3/4"	ES03
1"	ES04



## Rod To Tape Clamp (Type A) - To IEC 62561-1

Rod Dia	Max. Conductor	Part No
12.5mm(1/2")	26x12mm	RTC10
16mm(5/8")	26x12mm	RTC10
19mm(3/4")	26x10mm	RTC10
16mm(5/8")	40x12mm	RTC30
16mm(5/8")	51x8mm	RTC40
19mm(3/4")	51x12mm	RTC50
20mm	51x12mm	RTC50
12.5mm(1/2")	26x20mm	RTC60
12.5mm(1/2")	26x20mm	RTC60
19mm(3/4")	26x10mm	RTC60
25mm(1")	26x10mm	RTC60



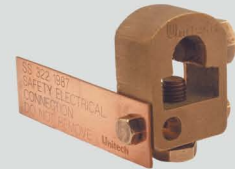
## Rod To Cable Clamp (Type B) - To BS EN 50164-1

Rod Dia	Conductor Range	Part No
9.5mm(3/8")	6-35mm	RCC9
12.5mm(1/2")	16-50mm	RCC12
16mm(5/8")	16-70mm	RCC16
19mm(3/4")	16-95mm	RCC20
25mm(1")	70-120mm	RCC25



## AB Clamp

Rod Dia	Max Conductor	Part No
16mm (5/8")	25mm x 3mm	CLAB500



## Rod To Cable Lug Clamp

Rod Dia	Rod Type	Part No
9.5mm (3/8")	Copperbond	RCLC9
16mm (5/8")	Copperbond	RCLC16
19mm (3/4")	Copperbond	RCLC20
16mm (5/8")	Solid Copper	RCLC16S
19mm (3/4")	Solid Copper	RCLC20S



## Tower Clamp

Max Conductor Size	Part No
50-70mm <sup>2</sup>	TC50
70-95mm <sup>2</sup>	TC70



## Earth Boss

Material	Thread	Part No
Galvanized Steel	M10	EB10GS
Stainless Steel 316	M10	EB10SS



## Tinned Copper Bonding Clip

Ext. Dia of Water Pipe	Part No
4/8"	BC6
6/8"	BC8
15mm	BC15
48mm	BC48
76mm	BC76

\*Other sizes available on request.



## "U" Bolt Rod Clamp - To IEC 62561-1

Rod / Pipe Dia	No. of Conductor(s)	Conductor Size	No. of Copper Tape(s)	Tape Size	Part No.
16mm (5/8") - 19mm (3/4")	1	50 - 95mm <sup>2</sup>	-	-	UC301
16mm (5/8") - 19mm (3/4")	2	50 - 70mm <sup>2</sup>	-	-	UC302
16mm (5/8") - 19mm (3/4")	3	50 - 70mm <sup>2</sup>	-	-	UC303
16mm (5/8") - 19mm (3/4")	5	50 - 70mm <sup>2</sup>	-	-	UC304
16mm (5/8") - 19mm (3/4")	3	50 - 120mm <sup>2</sup>	-	-	UC305
16mm (5/8") - 19mm (3/4")	2	70 - 120mm <sup>2</sup>	-	-	UC306
16mm (5/8") - 19mm (3/4")	1	70 - 120mm <sup>2</sup>	-	25mm x 3mm	UC307
16mm (5/8") - 19mm (3/4")	-	-	1 or 2	25mm x 3mm	UC308
30mm	-	-	1 or 2	50mm x 6mm	UC309
40mm	-	-	1	25mm x 3mm	UC310



UC301



UC303



UC304



UC307



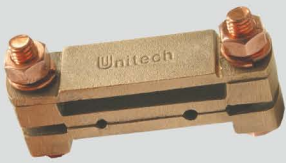
UC308



UC310

## Specification Of "H" Bolt Rod Clamp - To IEC 62561-1

Rod / Pipe Dia	No. of Conductor(s)	Conductor Size	No. of Copper Tape(s)	Tape Size	Part No.
16mm (5/8") - 19mm (3/4")	1	50 - 95mm <sup>2</sup>	-	-	HC401
16mm (5/8") - 19mm (3/4")	1	95 - 120mm <sup>2</sup>	-	-	HC402
16mm (5/8") - 19mm (3/4")	2	50 - 95mm <sup>2</sup>	-	-	HC403
16mm (5/8") - 19mm (3/4")	3	70 - 95mm <sup>2</sup>	-	-	HC404
16mm (5/8") - 19mm (3/4")	1	120 - 150mm <sup>2</sup>	-	-	HC405
16mm (5/8") - 19mm (3/4")	2	70 - 95mm <sup>2</sup>	1	25mm x 3mm	HCL504
16mm (5/8") - 19mm (3/4")	-	-	1	50mm x 6mm	HCL506
16mm (5/8") - 19mm (3/4")	2	6mm <sup>2</sup>	1	50mm x 6mm	HCL506S
300mm <sup>2</sup>	2	70mm <sup>2</sup>	-	-	HCL507
16mm (5/8") - 19mm (3/4")	2	120 - 150mm <sup>2</sup>	-	-	HCL512
16mm (5/8") - 19mm (3/4")	3	120 - 150mm <sup>2</sup>	-	-	HCL513
300mm <sup>2</sup>	2 + 1	70mm + 150mm <sup>2</sup>	-	-	HCL514
300mm <sup>2</sup>	5	70mm <sup>2</sup>	2	25mm x 3mm	HCL515
16mm (5/8") - 19mm (3/4")	2	95 - 120mm <sup>2</sup>	-	-	HCL516
120mm <sup>2</sup>	8	120mm <sup>2</sup>	-	-	HCL120-4
40mm Dia Rebar	1 + 1	40mm Dia Rebar	-	-	HCL401/2/40R



HCL506S



HCL506



HC404



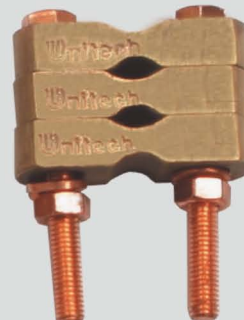
HCL507



HCL516



HCL514



HC401-2



HCL120-4

## Watermain Pipe Bond

Max. Tape Width	Material	Part No
26mm	Copper	WMB26
26mm	Aluminium	WMB26A



## Bar Bond

Max. Tape Width	Bolt Size	Material	Part No
26mm	M10	Copper	BB26
26mm	M10	Aluminium	BB26A
31mm	M10	Copper	BB31



## Rain Water Pipe Bond

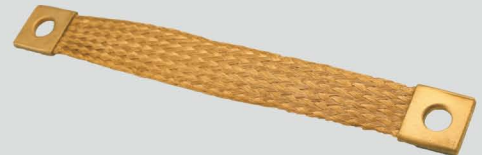
Max. Tape Width	Bolt Size	Material	Part No
26mm	M10	Copper	RWP26
26mm	M10	Aluminium	RWP26A



## Flexible Copper Braid Bond

(For bonding gates, doors or fences)

Dimensions	Hole Size	Length	Part No
25x3.5mm	11mm	200mm	FES101
25x3.5mm	11mm	400mm	FES102



## Tower Earth Clamp

(For Bonding Copper Cable To Steel Bar)

Dimensions	Bolt Size	Conductor	Part No
16-70mm <sup>2</sup>	M10	Copper	TEC16*
16-70mm <sup>2</sup>	M10	Tinned Copper	TEC16T*
25-50mm <sup>2</sup>	M10	Copper	TEC25*
25-50mm <sup>2</sup>	M10	Tinned Copper	TEC25T*
70-120mm <sup>2</sup>	M12	Copper	TEC70
70-120mm <sup>2</sup>	M12	Tinned Copper	TEC70T
120-185mm <sup>2</sup>	M12	Copper	TEC120
185-240mm <sup>2</sup>	M12	Copper	TEC185

\*Suitable for 8mm<sup>2</sup> solid circular conductor.



## Earthing Receptacle

(For Boats and Trucks)

Rod Dia	Part No
16mm (5/8")	EB58
19mm (3/4")	EB34



## Static Earth Receptacle

(For Aircraft, Fuel Trucks)

Material	Part No
Copper	SER10
Stainless Steel Grade 316	SER20



## High Strength Connector

L	M	H	S	Part No
20mm	M17 x 2.5mm	6mm	18mm	HSC20
27mm	M19 x 2.5mm	7mm	20mm	HSC27
35mm	M21 x 2.5mm	7mm	22mm	HSC35
42mm	M23 x 2.5mm	11mm	24mm	HSC42
45mm	M25 x 2.5mm	14mm	26mm	HSC45
60mm	M29 x 2.5mm	17mm	30mm	HSC60
62mm	M31 x 2.5mm	20mm	32mm	HSC62



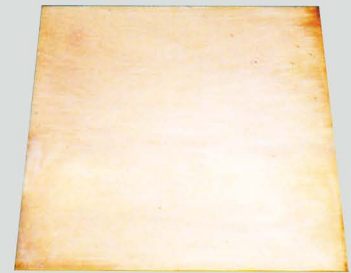
## C-Connector

Conductor Size	H	B	L	C	Part No
16mm <sup>2</sup>	8mm	12mm	13mm	5mm	CC16
25-35mm <sup>2</sup>	25mm	15mm	22mm	10mm	CC25
50-70mm <sup>2</sup>	34mm	21.5mm	25mm	11mm	CC50
95mm <sup>2</sup>	41mm	25mm	29mm	14.5mm	CC95
120mm <sup>2</sup>	47.5mm	29mm	30mm	16mm	CC120
150mm <sup>2</sup>	25mm	15mm	22mm	10mm	CC150
185mm <sup>2</sup>	34mm	21.5mm	25mm	11mm	CC185



## Earth Plate - Solid Copper - To BS EN 13601

Size (mm)	Part No
600 x 600 x 1.5	EPS661
900 x 900 x 1.5	EPS991
1200 x 1200 x 1.5	EPS12121
600 x 600 x 3	EPS663
900 x 900 x 3	EPS993
1200 x 1200 x 3	EPS12123
600 x 600 x 6	EPS666
900 x 900 x 6	EPS996
1200 x 1200 x 6	EPS12126



## Earth Mat - Copper Tape

Size	Part No
600 x 600 x 3mm	EPL663
900 x 900 x 3mm	EPL993
1200 x 1200 x 3mm	EPL12123
600 x 600 x 6mm	EPL666
900 x 900 x 6mm	EPL996
1200 x 1200 x 6mm	EPL12126



## Concrete Inspection Pit - To IEC 62561-5

Type	Material	Dimension	Part No
Square	Concrete	310x310x190mm	CIP10S



## Water Sealing Gland

Type	Part No
Top Water Sealing Gland	WPS - 1A
Bottom Water Sealing Gland	WPS - 1B
Double Sealing Gland	WPS - 3

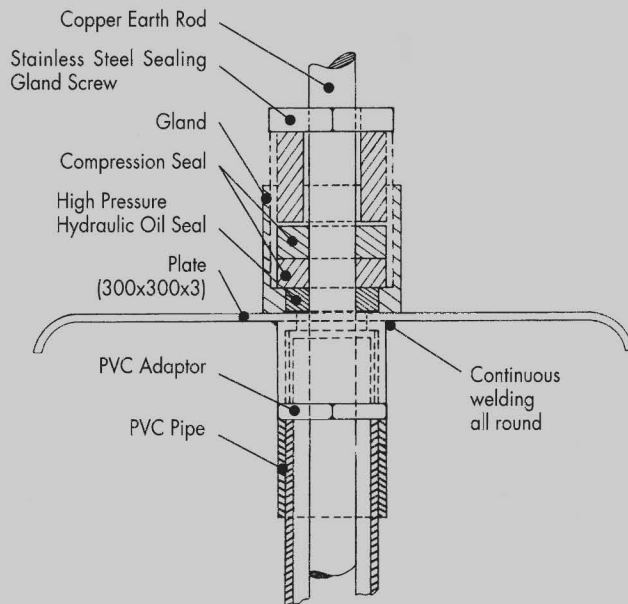


Top Water Sealing Gland

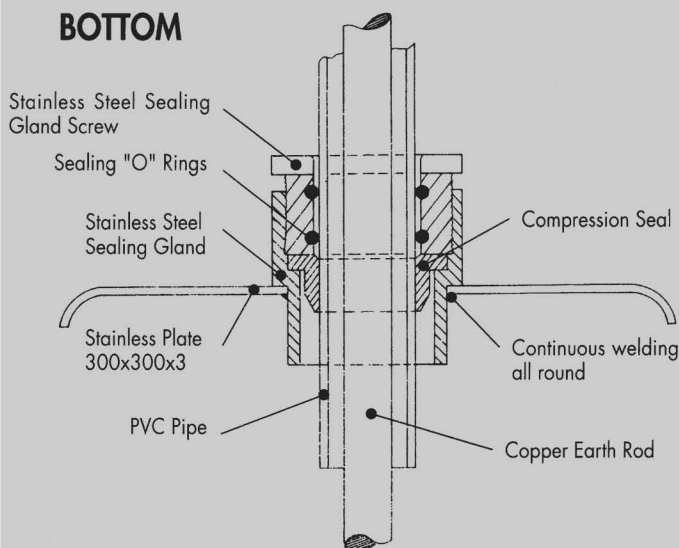


Double Sealing Gland

### TOP : Pressure tested to 200 PSI



### BOTTOM



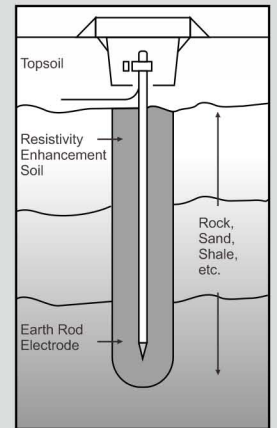
## Resistivity Enhancement Soil

RES 1 is a conductive cementitious product used in the improvement of earthing electrodes. It lowers the overall resistance of the system by increasing the surface area thus lowering resistance & increase the overall capacitance. RES 1 is sold in powder form and can be used as is right out of the bag, or mixed with water into a slurry.

### Technical Specification

Number	Test Item	Standard	Test Value		Conclusion
1	resistance test in room temp	$\rho \leq 5 \Omega \cdot m$	$\rho = 0.56 \Omega \cdot m \Delta$		acceptable
2	Physical and chemical performance check	$\rho \leq 6 \Omega \cdot m$			
	(1) dehydration test		$\rho = 0.81 \Omega \cdot m$		acceptable
	(2) cold and heat cycling		$\rho = 0.51 \Omega \cdot m$		acceptable
	(3) water dipping	$\rho = 0.48 \Omega \cdot m$		acceptable	
3	impact electric current tolerance	$\Delta R \% \leq 20\%$	$\Delta R \% = 4\%$		acceptable
4	working frequency electric current tolerance	$\Delta R \% \leq 20\%$	$\Delta R \% = 1.4\%$		acceptable
5	PH value measurement	Ph value is within 7-12	PH=9.6		acceptable
6	corrosion test from resistance reducing agent to steel grounding unit	surface average corrosion rate $\leq 0.03 \text{mm/a}$	surface average corrosion rate (mm/a)	range (mm/a)	
			Round steel: 0.0006	0.0005-0.0009	acceptable
	(1) corrosion test from pure resistance reducing agent to steel grounding unit	surface average corrosion rate $\leq 0.03 \text{mm/a}$	Flat steel: 0.0005	0.0005-0.0008	acceptable
			Zinc coated round steel: 0.0003	0.0002-0.0007	acceptable
			Zinc coated flat steel: 0.0002	0.0001-0.0006	acceptable
			Round steel: 0.0005	0.0003-0.0005	acceptable
(2) corrosion test to steel grounding units when rooted in ground	average corrosion rate $\leq 0.05 \text{mm/a}$	Flat steel: 0.0003	0.0002-0.0005	acceptable	
		Zinc coated round steel: 0.0004	around 0.0004	acceptable	
		Zinc coated flat steel: 0.0004	0.0002-0.0005	acceptable	

Sack weight	Part no.
25 kg	<b>RES 1</b>



## Bentonite

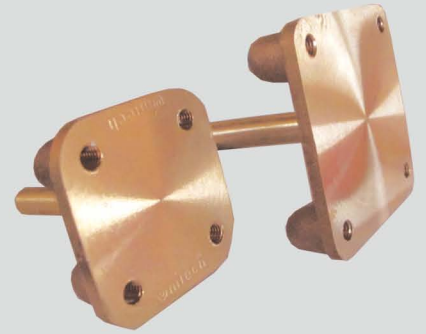
Bentonite expands when wet, absorbing as much as several times its dry mass in water while also improving the moisture retention in soil thus making it a great compound to use as back-fill in electrical earthing applications.

Sack weight	Part no.
25 kg	<b>BN001</b>



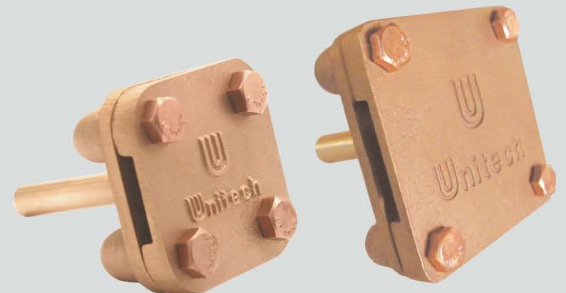
## Four-Hole Earth Point - To IEC 62561-1

Hole Size	Length	Material	Tape Size	Part No
M8 x 15mm	55mm	Copper	25x3mm	EP4
M8 x 15mm	55mm	Tinned Copper	25x3mm	EP4T
M8 x 15mm	60mm	Copper	25x6mm	EP4-256
M8 x 15mm	60mm	Tinned Copper	25x6mm	EP4T-256
M8 x 15mm	60mm	Copper	38x6mm	EP4-386
M8 x 15mm	60mm	Tinned Copper	38x6mm	EP4T-386
M8 x 15mm	60mm	Copper	50x6mm	EP4-506
M8 x 15mm	60mm	Tinned Copper	50x6mm	EP4T-506



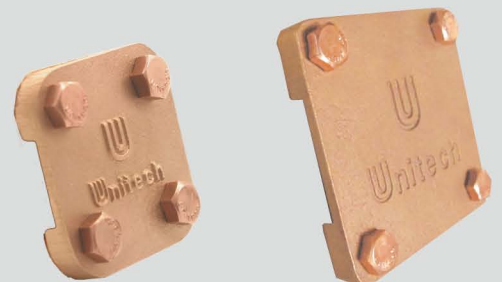
## Four-Hole Earth Point with Cover Plate - To IEC 62561-1

Hole size	Material	Tape Size	Part No
M8	Copper	25x3mm	EPCP4
M8	Tinned Copper	25x3mm	EPCP4T
M8	Copper	25x6mm	EPCP4-256
M8	Tinned Copper	25x6mm	EPCP4T-256
M8	Copper	38x6mm	EPCP4-386
M8	Tinned Copper	38x6mm	EPCP4T-386
M8	Copper	50x6mm	EPCP4-506
M8	Tinned Copper	50x6mm	EPCP4T-506



## Copper Point Cover Plate - To IEC 62561-1

Material	Tape Size	Part No
Copper	25x3mm	EPCP
Tinned Copper	25x3mm	EPCPT
Copper	25x6mm	EPCP-256
Tinned Copper	25x6mm	EPCPT-256
Copper	38x6mm	EPCP-386
Tinned Copper	38x6mm	EPCPT-386
Copper	50x6mm	EPCP-506
Tinned Copper	50x6mm	EPCPT-506



## Two-Hole Earth Point

Hole Size	Material	Part No
M8	Copper	EP2
M8	Tinned Copper	EP2T



## Earth Point Welded to 70mm<sup>2</sup> (G/Y) Cable

- To IEC 62561-1

Description	Part No
Four Hole Copper Earth Point Welded to 1 x 500mm Length 70mm <sup>2</sup> (Y/G) Cable Straight	EP4-70P
Four Hole Tinned Copper Earth Point Welded to 1 x 500mm Length 70mm <sup>2</sup> (Y/G) Cable Straight	EP4T-70P
Four Hole Copper Earth Point c/w Cover Plate Welded to 1 x 500mm Length 70mm <sup>2</sup> (Y/G) Cable Straight	EPCP4-70P
Four Hole Tinned Copper Earth Point c/w Cover Plate Welded to 1 x 500mm Length 70mm <sup>2</sup> (Y/G) Cable Straight	EPCP4T-70P



## Earth Point Welded to 2 x 70mm<sup>2</sup> (G/Y) Cable

- To IEC 62561-1

Description	Part No
Four Hole Copper Earth Point Welded to 2 x 500mm Length 70mm <sup>2</sup> (Y/G) Cable (Tee)	EP4-70P2
Four Hole Tinned Copper Earth Point Welded to 2 x 500mm Length 70mm <sup>2</sup> (Y/G) Cable (Tee)	EP4T-70P2
Four Hole Copper Earth Point c/w Cover Plate Welded to 2 x 500mm Length 70mm <sup>2</sup> (Y/G) Cable (Tee)	EPCP4-70P2
Four Hole Tinned Copper Earth Point c/w Cover Plate Welded to 2 x 500mm Length 70mm <sup>2</sup> (Y/G) Cable (Tee)	EPCP4T-70P2



## Copper Earth Point welded to Mild Steel Rod

- To IEC 62561-1

Joint Type	Steel Rod Dia	Part No (Bare)	Part No (Tinned)
T Joint	10mm	EP4-10H	EP4T-10H
T Joint	16mm	EP4-16H	EP4T-16H
T Joint	20mm	EP4-20H	EP4T-20H
T Joint	25mm	EP4-25H	EP4T-25H
Straight Joint	10mm	EP4-10S	EP4T-10S
Straight Joint	16mm	EP4-16S	EP4T-16S
Straight Joint	20mm	EP4-20S	EP4T-20S
Straight Joint	25mm	EP4-25S	EP4T-25S

\*Customer lengths and size of mild steel rod (cable) available on request.



## Copper Earth Point with Cover Plate welded to Mild Steel Rod

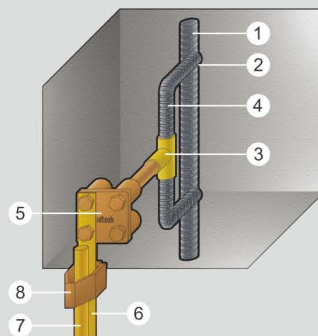
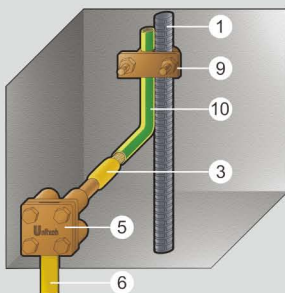
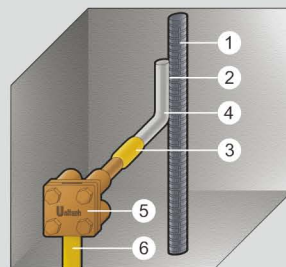
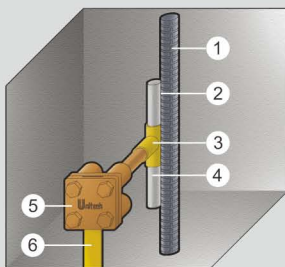
- To IEC 62561-1

Joint Type	Steel Rod Dia	Part No (Bare)	Part No (Tinned)
T Joint	10mm	EPCP4-10H	EPCP4T-10H
T Joint	16mm	EPCP4-16H	EPCP4T-16H
T Joint	20mm	EPCP4-20H	EPCP4T-20H
T Joint	25mm	EPCP4-25H	EPCP4T-25H
Straight Joint	10mm	EPCP4-10S	EPCP4T-10S
Straight Joint	16mm	EPCP4-16S	EPCP4T-16S
Straight Joint	20mm	EPCP4-20S	EPCP4T-20S
Straight Joint	25mm	EPCP4-25S	EPCP4T-25S

\*Customer lengths and size of mild steel rod (cable) available on request.

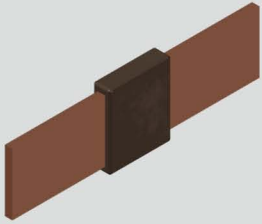


## Illustration Of Common Designs And Installations

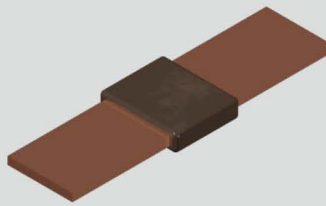


1. Reinforcement down conductor
2. Arc welding
3. Exothermic welding connection
4. Mild steel bar
5. Earth point
6. Copper tape
7. Earth rod
8. Rod to tape A Clamp
9. Rod to tape B Clamp
10. Yellow / green cable

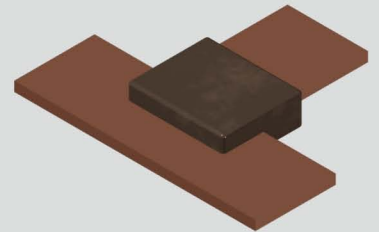
Joint Type : Busbar To Busbar



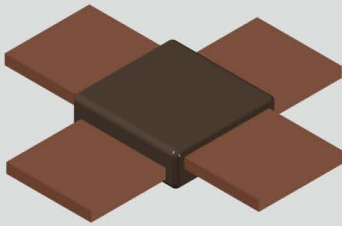
BB1



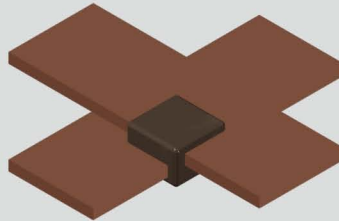
BB7



BB14



BB40



BB41



BB27

Joint Type : Cable To Cable



CC1



CC2



CC3



CC4



CC7



CC11



CC14



CC25

Joint Type : Cable To Rod



CR1

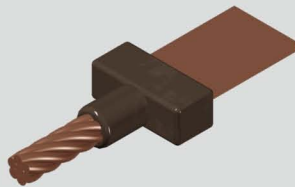


CR2



CR4

Joint Type : Cable To Busbar



CB1

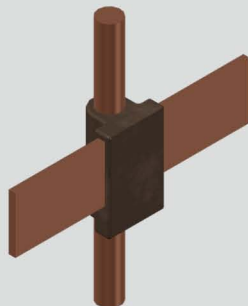


CB5

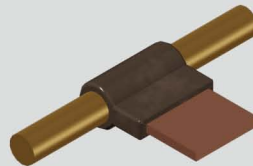
Joint Type : Rod To Busbar



BR1



BR3

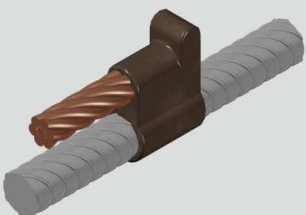


BR5



BR8

Joint Type : Cable To Rebar



CC24



CC25



CC26



CC27

### Welding Handling Clamp

Mold Type	Part No.
C	UHCC
D	UHCD
E	UHCE



### Welding Powder

Welding Powder (g)	Part No.
45	UP45
65	UP65
90	UP90
115	UP115
150	UP150
200	UP200
250	UP250



### Welding Tool Kit

Description	Part No.
Welding Tool Kit	TK-100



Earthing Terminal - To IEC 6256-11

50x6mm Earth Bars

Description	Length	Part No.
4 Way	300 mm	EBD 300/4 W/ 506
5 Way	400 mm	EBD 400/5 W/ 506
6 Way	450 mm	EBD 450/6 W/ 506
7 Way	475 mm	EBD 475/7 W/ 506
8 Way	550 mm	EBD 550/8 W/ 506
9 Way	600 mm	EBD 600/9 W/ 506
10 Way	650 mm	EBD 650/10 W/ 506
11 Way	700 mm	EBD 700/11 W/ 506
12 Way	750 mm	EBD 750/12 W/ 506
13 Way	800 mm	EBD 800/13 W/ 506
14 Way	850 mm	EBD 850/14 W/ 506
15 Way	900 mm	EBD 900/15 W/ 506
16 Way	950 mm	EBD 950/16 W/ 506
17 Way	1000 mm	EBD 1000/17 W/ 506
18 Way	1050 mm	EBD 1050/18 W/ 506
19 Way	1150 mm	EBD 1150/19 W/ 506
20 Way	1200 mm	EBD 1200/20 W/ 506
21 Way	1250 mm	EBD 1250/21 W/ 506
22 Way	1300 mm	EBD 1300/22 W/ 506
23 Way	1350 mm	EBD 1350/23 W/ 506
24 Way	1400 mm	EBD 1400/24 W/ 506
25 Way	1450 mm	EBD 1450/25 W/ 506
26 Way	1500 mm	EBD 1500/26 W/ 506
27 Way	1550 mm	EBD 1550/27 W/ 506
28 Way	1650 mm	EBD 1650/28 W/ 506
29 Way	1700 mm	EBD 1700/29 W/ 506
30 Way	1750 mm	EBD 1750/30 W/ 506

50x6mm Earth Bars With Single Disconnecting Link

Description	Length	Part No.
4 Way	400 mm	EBD 400 S/ 4 W/ 506
5 Way	500 mm	EBD 500 S/ 5 W/ 506
6 Way	550 mm	EBD 550 S/ 6 W/ 506
7 Way	575 mm	EBD 575 S/ 7 W/ 506
8 Way	650 mm	EBD 650 S/ 8 W/ 506
9 Way	700 mm	EBD 700 S/ 9 W/ 506
10 Way	750 mm	EBD 750 S/ 10 W/ 506
11 Way	800 mm	EBD 800 S/ 11 W/ 506
12 Way	850 mm	EBD 850 S/ 12 W/ 506
13 Way	900 mm	EBD 900 S/ 13 W/ 506
14 Way	950 mm	EBD 950 S/ 14 W/ 506
15 Way	1000 mm	EBD 1000 S/ 15 W/ 506
16 Way	1050 mm	EBD 1050 S/ 16 W/ 506
17 Way	1100 mm	EBD 1100 S/ 17 W/ 506
18 Way	1150 mm	EBD 1150 S/ 18 W/ 506
19 Way	1250 mm	EBD 1250 S/ 19 W/ 506
20 Way	1300 mm	EBD 1300 S/ 20 W/ 506
21 Way	1350 mm	EBD 1350 S/ 21 W/ 506
22 Way	1400 mm	EBD 1400 S/ 22 W/ 506
23 Way	1450 mm	EBD 1450 S/ 23 W/ 506
24 Way	1500 mm	EBD 1500 S/ 24 W/ 506
25 Way	1550 mm	EBD 1550 S/ 25 W/ 506
26 Way	1600 mm	EBD 1600 S/ 26 W/ 506
27 Way	1650 mm	EBD 1650 S/ 27 W/ 506
28 Way	1750 mm	EBD 1750 S/ 28 W/ 506
29 Way	1800 mm	EBD 1800 S/ 29 W/ 506
30 Way	1850 mm	EBD 1850 S/ 30 W/ 506

50x6mm Earth Bars With Twin Disconnecting Link

Description	Length	Part No.
4 Way	500 mm	EBD 500 D/ 4 W/ 506
5 Way	600 mm	EBD 600 D/ 5 W/ 506
6 Way	650 mm	EBD 650 D/ 6 W/ 506
7 Way	675 mm	EBD 675 D/ 7 W/ 506
8 Way	750 mm	EBD 750 D/ 8 W/ 506
9 Way	800 mm	EBD 800 D/ 9 W/ 506
10 Way	850 mm	EBD 850 D/ 10 W/ 506
11 Way	900 mm	EBD 900 D/ 11 W/ 506
12 Way	950 mm	EBD 950 D/ 12 W/ 506
13 Way	1000 mm	EBD 1000 D/ 13 W/ 506
14 Way	1050 mm	EBD 1050 D/ 14 W/ 506
15 Way	1100 mm	EBD 1100 D/ 15 W/ 506
16 Way	1150 mm	EBD 1150 D/ 16 W/ 506
17 Way	1200 mm	EBD 1200 D/ 17 W/ 506
18 Way	1250 mm	EBD 1250 D/ 18 W/ 506
19 Way	1350 mm	EBD 1350 D/ 19 W/ 506
20 Way	1400 mm	EBD 1400 D/ 20 W/ 506
21 Way	1450 mm	EBD 1450 D/ 21 W/ 506
22 Way	1500 mm	EBD 1500 D/ 22 W/ 506
23 Way	1550 mm	EBD 1550 D/ 23 W/ 506
24 Way	1600 mm	EBD 1600 D/ 24 W/ 506
25 Way	1650 mm	EBD 1650 D/ 25 W/ 506
26 Way	1700 mm	EBD 1700 D/ 26 W/ 506
27 Way	1750 mm	EBD 1750 D/ 27 W/ 506
28 Way	1850 mm	EBD 1850 D/ 28 W/ 506
29 Way	1900 mm	EBD 1900 D/ 29 W/ 506
30 Way	1950 mm	EBD 1950 D/ 30 W/ 506

Disconnecting Link

Description	Length	Part No.
Disconnecting Link	125 mm	EBD125



EBD125



EBD450/6W/506



EBD650D/6W/506



Unitech Electric Group Limited

Tel. : (852) 8200 0973  
Fax : (852) 8200 0976  
Email : [info@unitechlightning.com](mailto:info@unitechlightning.com)  
Website : [www.unitechlightning.com](http://www.unitechlightning.com)